

ARDRA MINI 18,2x13 -en- LINEAR LIGHTING Ø 168

INDOOR LED PROFILE

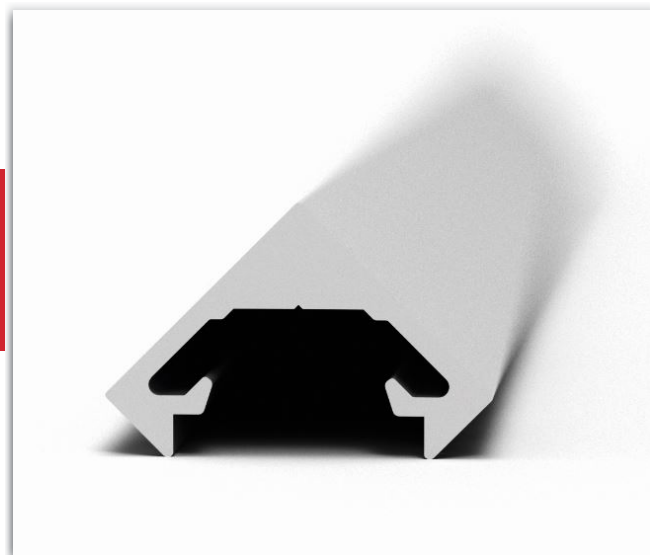
APPLICATIONS:

- Independent LED lamp
- Light for private homes
- Lighting above and below cabinets
- Complementary furnishing item (offices / restaurants / hotels / hospitals / houses)
- Exhibition shelves LED lighting (retail / stores)
- Interior design projects

DESCRIPTION:

Material: Natural anodised aluminum with transparent or opaline diffuser, resistant to UV rays and shocks.

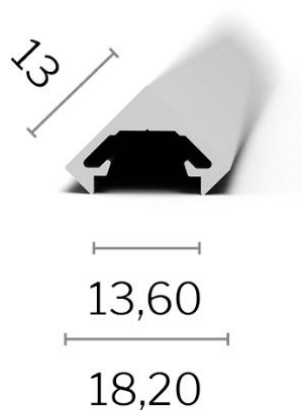
Dimensions: 13 mm in height and 18,2 mm in width. Minimum length 30cm, maximum 300cm (other sizes on request).



IP40



DATA SHEET



CHARACTERISTICS

LED module: mid-power LEDs on metal core PCB

PCB LED 5mm - 9W/mt CRI>90

W/mt	K	lm/mt	V	CRI
9	2700	980	24V	>90
9	3000	1050	24V	>90
9	4000	1150	24V	>90

ARDRA MINI 18,2x13 -en- LINEAR LIGHTING Ø 168

PCB LED 5mm - 15W/mt CRI>90

W/mt	K	lm/mt	V	CRI
15	2700	1770	24V	>90
15	3000	1830	24V	>90
15	4000	2030	24V	>90

NOTES AND ACCESSORIES

- Magnetic kit for fixing
- Touch switch or sensor pir.
- Controller for RGB management and light dimmer dimming.
- Standard cable length 1500mm, other sizes on request.
- Power supplies not included, to be ordered separately.

Last update: 4 May 2021