

ARDRA LAMP 35 BI -en- LINEAR LIGHTING O O35

INDOOR LED PROFILE

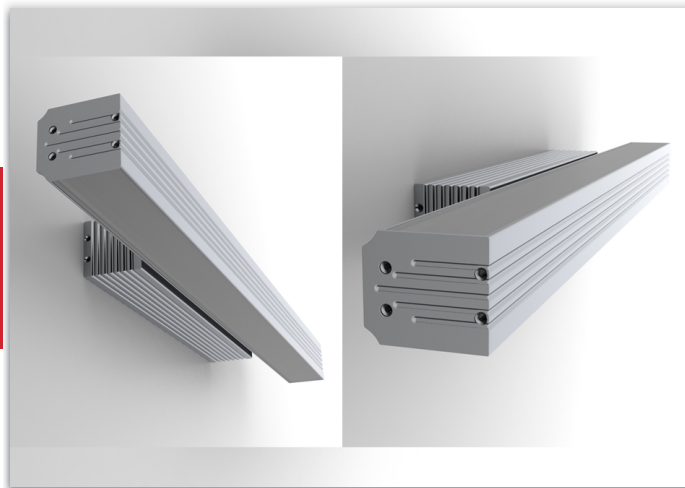
APPLICATIONS:

- Independent lamp, wall-mounted line or bidirectional ceiling line with on-board power supply
- Technical lighting, linear and architectural (ceiling / walls)
- Linear architectural lighting
- Interior design projects

DESCRIPTION:

Material: high quality natural anodised aluminum with great heat-dissipation capability and opaline diffuser.

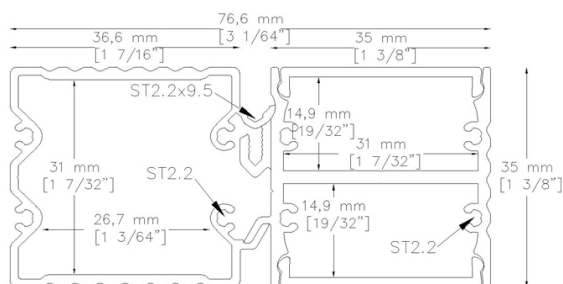
Dimensions: 35 mm in height and 76,6 mm in width. Minimum length 30cm, maximum 200cm (other sizes on request)



IP40



DATA SHEET



CHARACTERISTICS

LED module: mid-power LEDs on metal core PCB

PCB LED 11W

W/mt	K	lm/mt	LED/mt - Type - V	CRI
11	2700	1440	168 - SMD 2835 - 24V	>85
11	3000	1520	168 - SMD 2835 - 24V	>85
11	4000	1600	168 - SMD 2835 - 24V	>85

PCB LED 22W

W/mt	K	lm/mt	LED/mt - Type - V	CRI
22	2700	2970	168 - SMD 2835 - 24V	>85
22	3000	3124	168 - SMD 2835 - 24V	>85
22	4000	3300	168 - SMD 2835 - 24V	>85

ARDRA LAMP 35 BI -en- LINEAR LIGHTING O 035

STRIP LED 19W DYNAMIC WHITE

W/mt	K	lm/mt	LED/mt - Type - V	CRI
19	2700-3200+6000-6500	1120+1232	56+56 - SMD 2835 - 24V	>80

Strip LED RGB+W

W/mt	K (White)	lm/mt (White)	LED/mt - Type - V	CRI (White)
20	RGB+WW 2800-3000	504	84 - SMD 5050 - 24V	WW>80
20	RGB+NW 3800-4000	588	84 - SMD 5050 - 24V	NW>80
20	RGB+CW 6000-6500	672	84 - SMD 5050 - 24V	CW>80

NOTES AND ACCESSORIES

- Controller for RGB management and light dimmer dimming.
- Standard cable length 1500mm, other sizes on request.
- Power supplies not included, to be ordered separately.

Last update: 26 August 2019